

SUMMER BALLET INTENSIVE

JULY 25TH-30TH

MASTER CLASS JULY 25

Elevate your pointe work with Ashley Laracey in this exclusive masterclass. Refine technique, artistry, and musicality through expert coaching and detailed feedback.

For dancers with at least one full year of pointe training

MONDAY - THURSDAY DAILY SCHEDULE

Tech 1/1b (non pointe)

9:30 - 10:45am | Technique and Variations with Ms. Ashley
11:00 - 12:00 | Rotating Genre

Tech 2/3/4 (all pointe)

10:00 - 10:45am | Rotating Genre
11:00 - 1:00pm | Technique
1:15 - 2:15pm | Pointe 1/2/3
**** Pointe 3 1:15-2:30pm ****

Guest Artist: Ashley Laracey

New York City Ballet, Soloist
photo by Paul Kolnik



TUITION

MEMBERS
Tech 1/1b | \$219
Tech 2/3/4 | \$389

NON-MEMBERS
Tech 1/1b | \$234
Tech 2/3/4 | \$409

DROP-IN-RATE:
1/1.25/1.5 hrs: \$25/\$30/\$35

DROP-IN-RATE:
1/1.25/1.5 hrs: \$30/\$35/\$40

WEEKLY CLASSES

JUNE SESSION: 8-25TH | JULY SESSION 6-23RD

Weekly technique classes to keep up with your training this summer.

MONDAYS

4:30-5:45pm | Tech 1/1b
5:45-7:15pm | Tech 3/4
7:15-8:15pm | Pointe 2/3

TUESDAYS

4:30-6:00pm | Tech 2/3
6:00-7:00pm | Pointe 1

WEDNESDAYS

4:30-6:00pm | Tech 3/4
6:00-7:00pm | Pointe 2/3

THURSDAYS

4:30-6:00pm | Tech 2/3
6:00-7:00pm | Pointe 1

TUITION

MEMBERS

Tech 1/1b: \$69 (1) | \$124 (2)
Tech 2/3: \$84 (1) | \$149 (2)
Tech 3/4: \$84 (1) | \$149 (2)
Pr/Pointe 1/2/3: \$59 (1) | \$89 (2)

NON-MEMBERS

Tech 1/1b: \$74 (1) | \$134 (2)
Tech 2/3: \$89 (1) | \$159 (2)
Tech 3/4: \$89 (1) | \$159 (2)
Pr/Pointe 1/2/3: \$64 (1) | \$99 (2)

DROP-IN-RATE:
1/1.25/1.5 hrs: \$25/\$30/\$35

DROP-IN-RATE:
1/1.25/1.5 hrs: \$30/\$35/\$40

Members are defined as families with children enrolled in our year-round program

NUTCRACKER AUDITION WORKSHOP

AUGUST 10-13TH

The Nutcracker Audition Workshop is designed to help dancers feel confident and prepared for audition day. In addition to technique, dancers will focus on artistry, performance quality, and musical expression, while learning helpful audition tips and expectations, so they can walk into Nutcracker auditions feeling ready to perform at their best.

MONDAYS - THURSDAY

4:30-5:45pm | Tech 1/1b/2 (Technique, variations, character)
5:45-7:15pm | Tech 2/3/4 (Technique, pointe, variations, character)

**** Tech 1/1b/2 Dancers not auditioning on pointe ****
**** Tech 2/3/4 Dancers auditioning on pointe ****

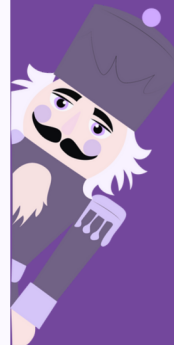
TUITION

MEMBERS
Tech 1/1b/2 | \$145
Tech 2/3/4 | \$174

NON-MEMBERS
Tech 1/1b/2 | \$155
Tech 2/3/4 | \$185

DROP-IN-RATE:
1/1.25/1.5 hrs: \$25/\$30/\$35

DROP-IN-RATE:
1/1.25/1.5 hrs: \$30/\$35/\$40



Summer Cancellation Policy: Cancellations made 7 days or more in advance of the event date, will receive a 100% credit on account. Cancellations made within 2 - 6 days will receive a 50% credit on account. Cancellations made within 24 hours of the event are non-refundable.

211 Rock Prairie Rd., College Station, TX | 979.485.8277 | suzannedancestudio.com